



National Association of State Emergency Medical Services Officials

DIA GAINOR, NASEMSO EXECUTIVE DIRECTOR

TIM TALKS AUGUST 2020

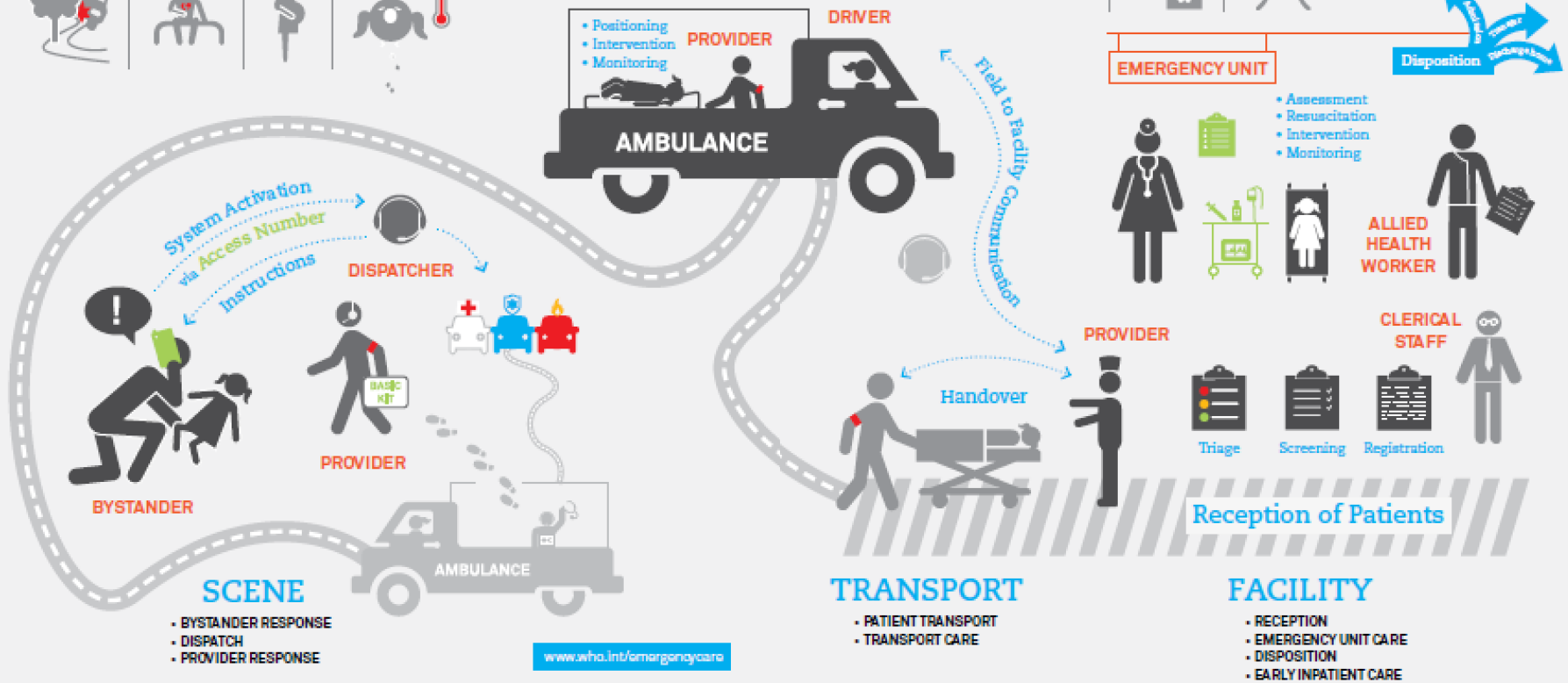


NO
TRAFFIC
SIGNS

The WHO Emergency Care System Framework

FIGURE 3: THE WHO EMERGENCY CARE SYSTEM FRAMEWORK

All around the world, acutely ill and injured people seek care every day. Frontline providers manage children and adults with injuries and infections, heart attacks and strokes, asthma and acute complications of pregnancy. An integrated approach to early recognition and management reduces the impact of all of these conditions. Emergency care could address over half of the deaths in low- and middle-income countries.



What Do State EMS Offices Do???

- ▶ License paramedics and EMTs (>1 million nationally)
- ▶ License ground and air ambulances (18K/750)
- ▶ Mandate patient care records submission (NEMESIS)
- ▶ Manage systems of care for time sensitive emergencies
- ▶ Implement innovative programs to improve safety and outcomes



NASEMSO's Architecture

Councils-State Reps

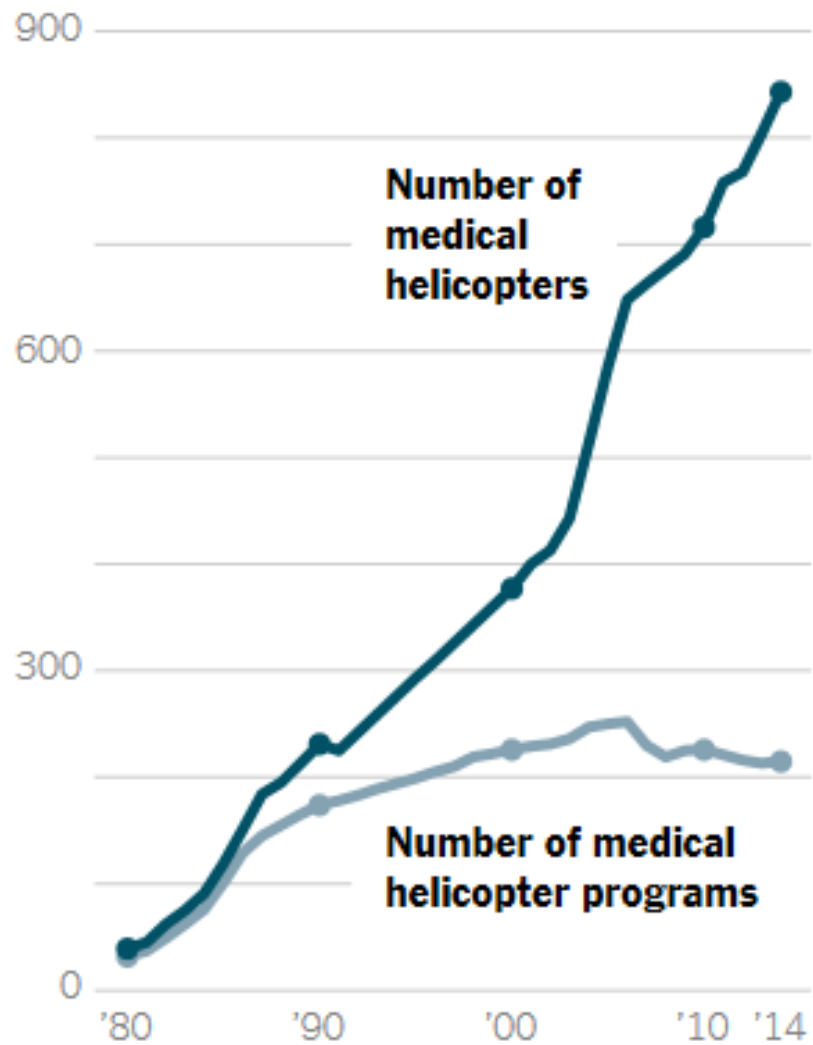
- ▶ Personnel Licensure
- ▶ Medical Directors
- ▶ Data Managers
- ▶ Trauma System Managers
- ▶ EMS for Children
- ▶ Health & Medical Preparedness

Committees

- ▶ Highway Incidents & Transportation Systems
- ▶ Agency & Vehicle Licensure
- ▶ Rural EMS
- ▶ Communications & Technology
- ▶ + Six others

What we hope gets on the
TIM radar screen next...





Source: Dr. Ira J. Blumen (University of Chicago)

By The New York Times

Dia Gainor

Dia@NASEMSO.org

www.nasemso.org

208-861-4841

